

Field: Wildcat
Permit: EP 125
State: NT
Country: AUSTRALIA
Scale: 1:500

Rotary Table: 482.0m AHD
Ground Level: 476.9m AHD
GDA 94 Co-ordinates:
Lat: 25° 30' 22.45"S(Prelim.)
Long: 132° 47' 48.30"E(Prelim.)

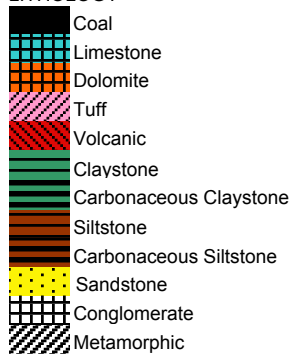
Rig: BL WW07
Spud Date: 13/09/2013
Surf. TD Date: 13/09/2013
Surf. Total Depth: 788m
Final Status: C&S

Open Hole:
12 1/4" 788m

Cased Hole:
9 5/8" 785.2m

Geologist: D. Adderley

LITHOLOGY



ACCESSORIES

- ◆ - Pyrite
- G - Glauconite
- F - Feldspar
- M - Mica
- - Carbonaceous
- Fe - Ferrous
- ~ - Fossils
- ▲ - Chert
- S - Siderite

DRILLING DATA

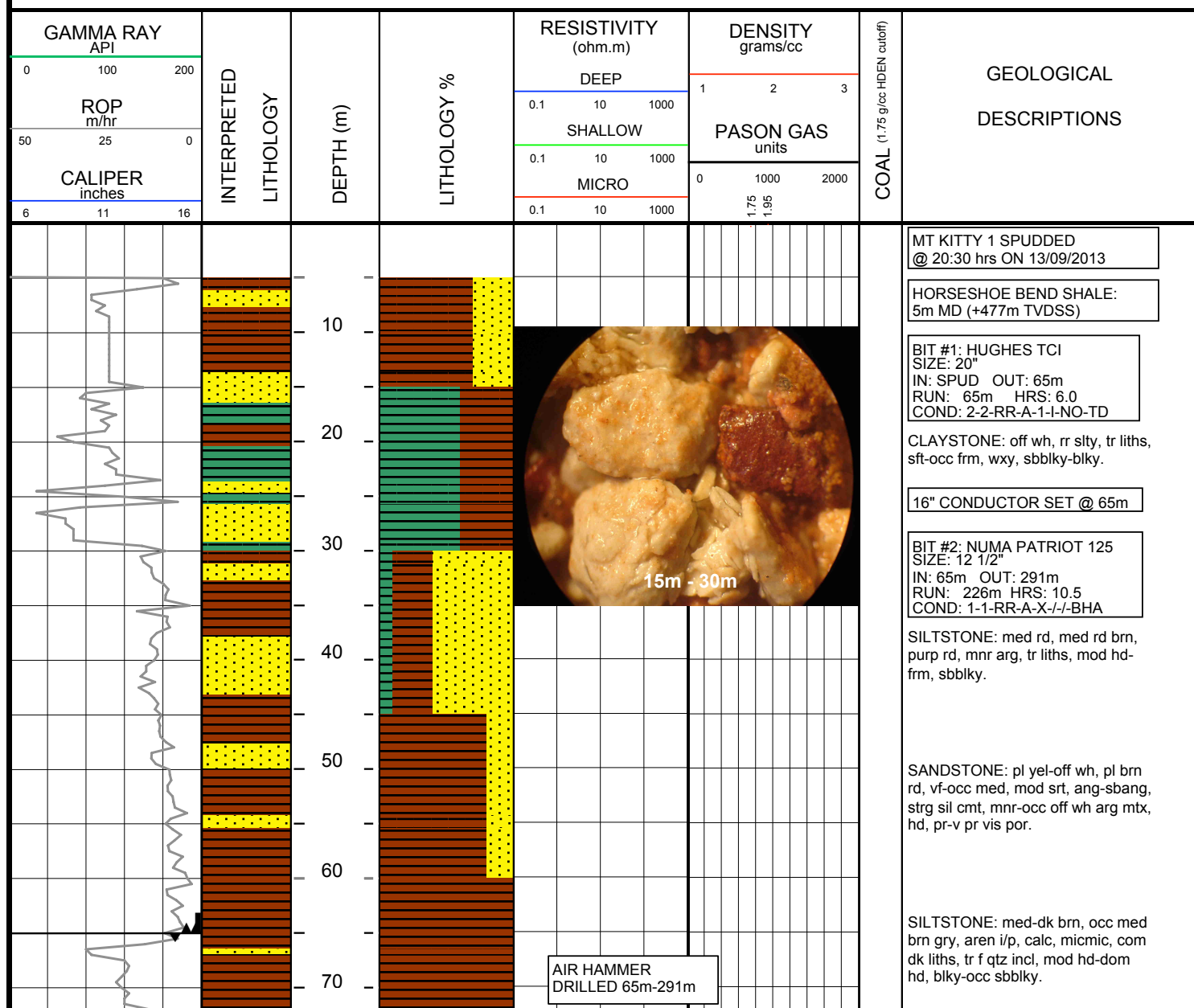
- └ - Casing Shoe
- ▲ - Bit Trip
- ▲ - Wiper Trip
- || - Core
- ◆ - DST
- └ - Deviation Survey

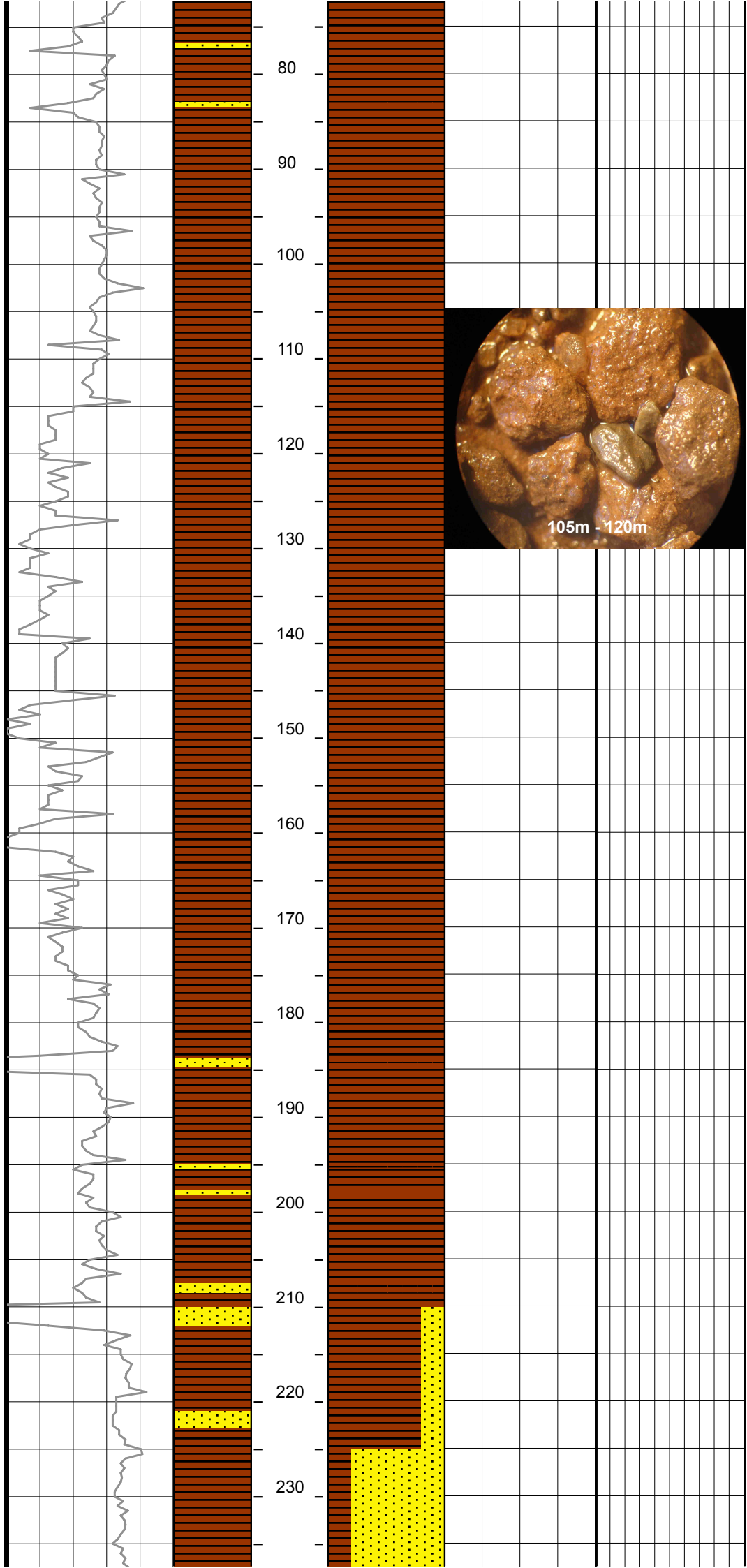
MUD DATA

- MW - Mud Weight (ppg)
- FV - Funnel Viscosity (s/qt)
- PV - Plastic Viscosity (cps)
- YP - Yield Point (lb/100ftsq)
- Gel - Gel Strength (10sec)
- WL - Water Loss (cc/30min)
- pH - Acidity / Alkalinity
- Ck - Cake (32nd/inch)
- Sol - Solids (% vol)
- Cl - Chlorides (mg/l)

ABBREVIATIONS

- BOPD - Barrels of Oil Per day
- BWPD - Barrels of Water Per Day
- DST - Drill Stem Test
- GCM - Gas Cut Mud
- GCW - Gas Cut Water
- GTS - Gas To Surface
- MMCFD - Million Cubic Feet / Day
- NGTS - No Gas To Surface
- NOTS - No Oil To Surface
- OCM - Oil Cut Mud
- OG - Over Gauge
- Q - Flow Rate
- REC - Recovery
- RTSTM - Rate Too Small To Measure
- SGCM - Slightly Gas Cut Mud





SILTSTONE: med-dk brn, occ med brn gry, occ gry blu, aren i/p, calc, micmic, loc com mica flks, com dk liths, tr f qtz incl, mod hd-dom hd, blk-occ sbbly.

SILTSTONE: med-dk brn, occ med brn gry, occ gry blu, aren i/p, mnr gypsum frags, calc, micmic, loc com mica flks, com dk liths, tr f qtz incl, mod hd-dom hd, blk-occ sbbly.

SILTSTONE: med-dk brn, occ med brn gry, occ gry blu, aren i/p, mnr gypsum frags, calc, micmic, loc com biotite flks, com dk liths, tr f qtz incl, mod hd-dom hd, blk-occ sbbly.

SILTSTONE: gry blu, med-dk brn, occ med brn gry, aren i/p, rr gypsum frags, calc, micmic, loc com biotite flks, occ dk liths, tr f qtz incl, mod hd-dom hd, blk-occ sbbly.

SILTSTONE: med-dk brn, occ med brn gry, gry blu, aren i/p, mnr gypsum frags, calc, micmic, loc biotite flks, occ liths, tr f qtz incl, mod hd-dom hd, blk-occ sbbly.

SILTSTONE: med-dk brn, occ med brn gry, occ gry blu, mnr aren i/p, calc, micmic, tr biotite flks, occ liths, tr f-v crs qtz incl, mod hd-dom hd, blk-occ sbbly.

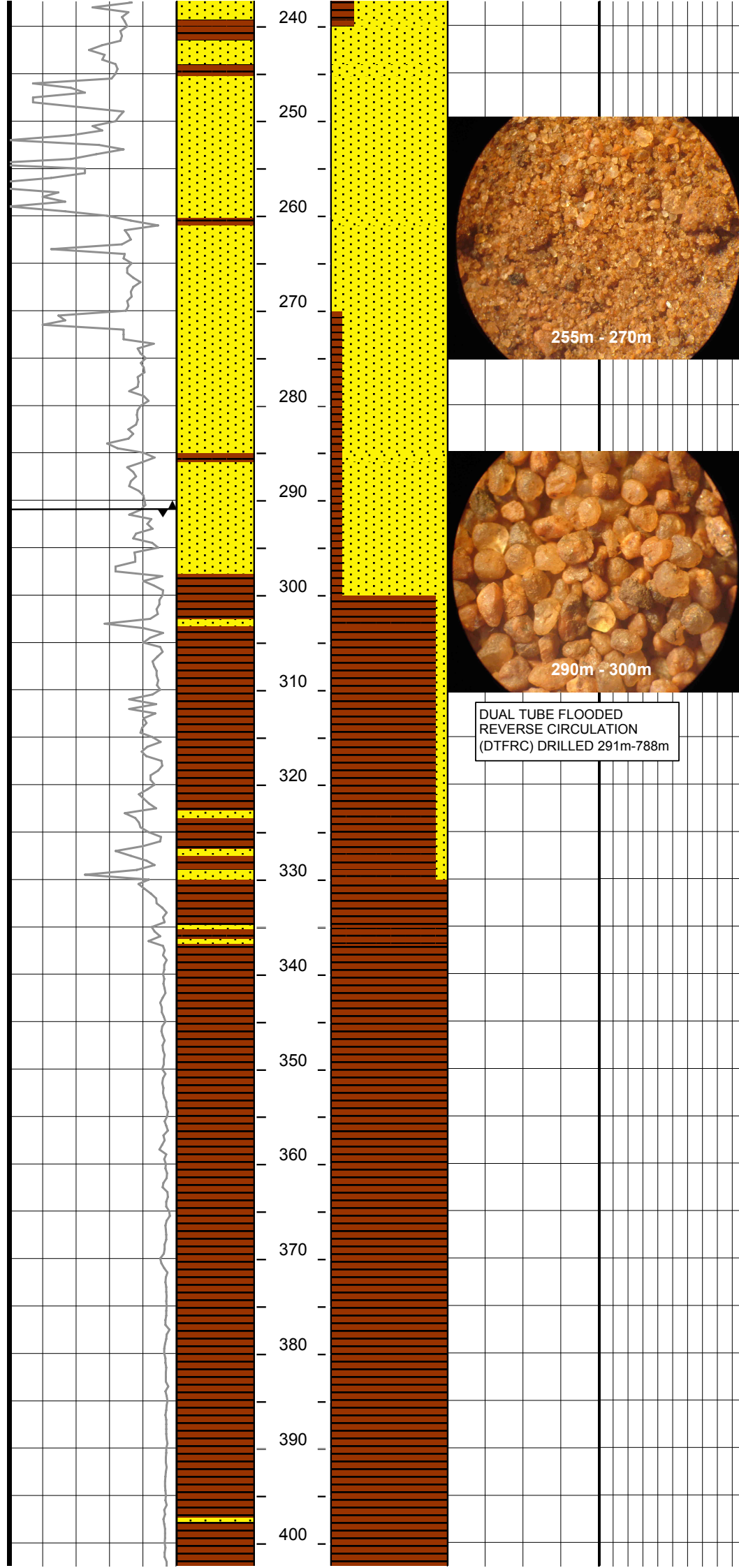
SILTSTONE: med-dk brn, occ med brn gry, occ gry blu, mnr aren i/p, calc, micmic, loc com biotite flks, occ liths, occ v crs qtz incl, mod hd-dom hd, blk-occ sbbly.

SANDSTONE: (Tr) off wh-pl gry, vf-rr f, rr v crs lse grns (possible cavings), wl srt, ang-sbang, mod calc cmt, occ-com off wh arg mtx, tr liths, hd, v pr-ti vis por.

SILTSTONE: med-dk brn, occ med brn gry, occ gry blu, mnr aren i/p, calc, micmic, loc com biotite flks, occ liths, occ med-v crs qtz incl, mod hd-dom hd, blk-occ sbbly.

SANDSTONE: off wh-pl brn, vf-f, rr v crs lse grns (possible cavings), mod srt, ang-sbang, mod calc cmt, occ-com off wh arg mtx, tr liths, hd, v pr-ti vis por.

SILTSTONE: med brn, aren, calc, micmic, occ liths, occ med qtz incl, mod hd-dom hd, blk-occ sbbly.



SANDSTONE: clr-trnsl, pl org rd, mnr pl gry, vf-med, crs-v crs i/p, v pr srt, sbang-sbrnd, wk calc cmt, mnr off wh arg mtx, occ liths, dom lse cln grns, fri i/p, fr vis por.

SANDSTONE: clr-trnsl, pl org rd, mnr pl gry, vf-med, crs-v crs i/p, v pr srt, sbang-mnr sbrnd, wk calc cmt, mnr off wh arg mtx, occ liths, dom lse cln grns, fri i/p, fr vis por.

SANDSTONE: clr-trnsl, pl org rd, mnr pl gry, vf-f, med-v crs i/p, v pr srt, sbang-mnr sbrnd, wk calc cmt, mnr off wh arg mtx, occ liths, dom lse cln grns, fri i/p, fr vis por.

BIT #3: SMITH TCI
GF147YOD1PS
SIZE: 12.25"
IN: 291m OUT: 578.3m
RUN: 287.3m HRS: 105.5
COND: 3-3-FC-A-1-I-BT-BHA

SANDSTONE: pl org, trnsl-pl gry, v crs, wl srt, sbrnd-occ sbang, mnr rnd, wk calc cmt, occ pl brn slty mtx, mnr liths, rr qtz o/grths, dom lse grns, rr fri, v gd inf por, gd vis por.

SILTSTONE: med brn, mnr brn gry, aren i/p, calc, micmic, occ liths, mod hd-hd, sbblky-blky.

SILTSTONE: med-occ dk brn, mnr brn gry, aren i/p, calc, micmic, occ liths, mod hd-hd, sbblky-blky.

SANDSTONE: pl org, trnsl-pl gry, v crs, wl srt, sbrnd-occ sbang, mnr rnd, wk calc cmt, occ pl brn slty mtx, mnr liths, lse grns, v gd inf por.

SILTSTONE: med-occ dk brn, arg, calc, micmic, occ liths, mod hd-hd, sbblky-blky.

SILTSTONE: med brn, mnr brn rd, mnr pl gry, arg, g/t Claystone i/p, calc, micmic, occ liths, mod hd-hd, sbblky-blky.

SILTSTONE: med brn, mnr brn rd, mnr pl gry, arg, g/t Claystone i/p, calc, tr micmic, occ liths, mod hd-hd, sbblky-blky.

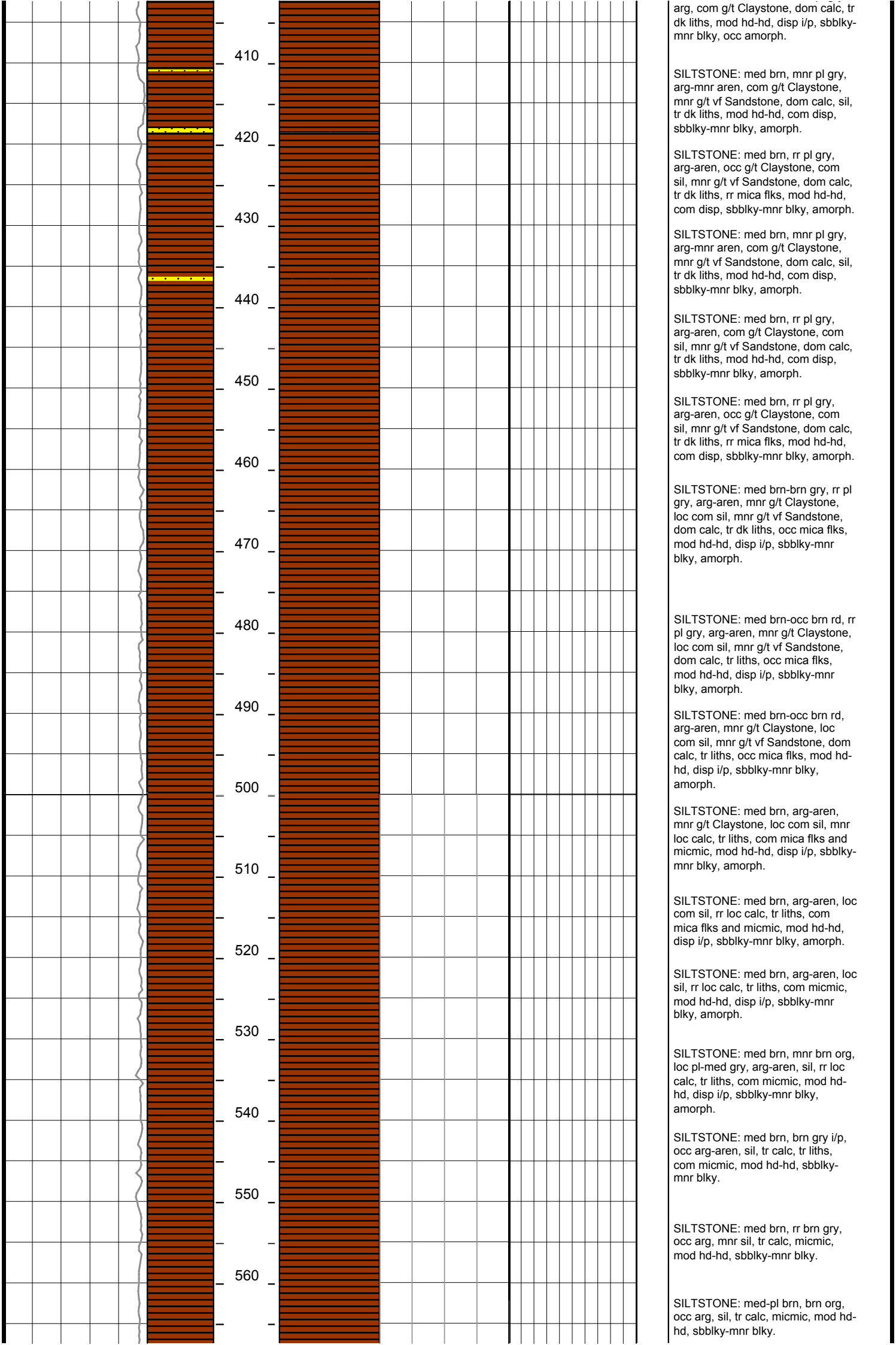
SILTSTONE: pl-med brn rd, mnr pl gry, arg, com g/t Claystone, calc, tr dk liths, mod hd-hd, disp i/p, sbblky-mnr blky, occ amorph.

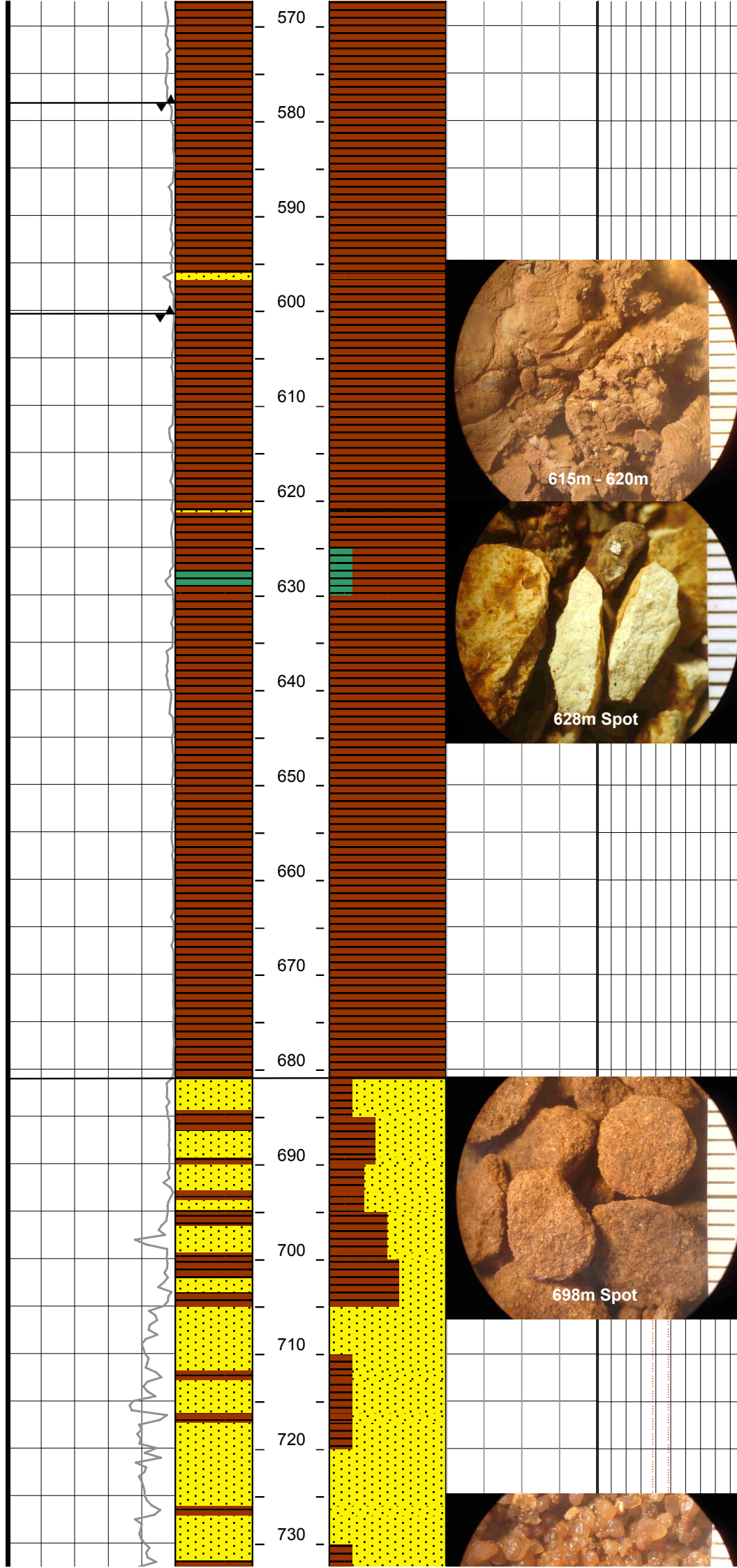
SILTSTONE: pl-med brn rd, med brn, mnr pl gry, arg, com g/t Claystone, calc, tr dk liths, mod hd-hd, disp i/p, sbblky-mnr blky, occ amorph.

SILTSTONE: pl-med brn rd, med brn, mnr pl gry, arg, com g/t Claystone, dom calc, tr dk liths, mod hd-hd, disp i/p, sbblky-mnr blky, occ amorph.

SANDSTONE: (Tr) pl gry-off wh, vf, v wl srt, sbang-occ sbrnd, strg calc cmt, mnr off wh arg mtx, com dk liths, hd, ti vis por.

SILTSTONE: med brn, mnr pl gry,





SILTSTONE: med brn, brn org, med brn gry, occ arg, com sil, mn calc, com micmic, mod hd-hd, sbbiky-mnr blkly.

BIT #4: SMITH TCI
GF147YOD1PS
SIZE: 12.25"
IN: 578.3m OUT: 600.5m
RUN: 22.2m HRS: 29.5
COND: N/A

SANDSTONE: (Tr) off wh, pl brn, vf, v wl srt, sbang-occ sbmd, mod sil cmt, mn off wh arg mt, tr liths, fri-mod hd, pr vis por.

BIT #5RR: SMITH TCI
GF147YOD1PS
SIZE: 12.25"
IN: 600.5m OUT: 788m
RUN: 187.5m HRS: 142.3
COND: 2-2-FC-A-1-1-TD

SILTSTONE: med brn, rr med gry, dom arg, com g/t Claystone, mn calc, mn-loc com micmic, sft-v sft, rr mod hd, dom amorph, mn sbbiky.

CLAYSTONE: off wh, mn pl purp, slty i/p, chalky texture, tr liths, tr gypsum frags, hd-dom v hd, dom blkly-occ sbbiky.

SILTSTONE: med brn, rr med gry, dom arg, com g/t Claystone, mn calc, mn micmic, sft-v sft, rr mod hd, dom amorph, mn sbbiky.

SILTSTONE: med brn, loc med gry, dom arg, com g/t Claystone, mn loc calc, mn micmic, sft-v sft, tr mod hd, dom amorph, mn sbbiky.

SILTSTONE: med brn, loc med gry grn, dom arg-mn loc aren, com g/t Claystone, mn sil, mn loc calc, mn micmic, sft-v sft, loc mod hd, dom amorph, mn sbbiky.

SILTSTONE: med brn, mn med gry, dom arg, com g/t Claystone, rr calc, mn micmic, sft-v sft, rr mod hd, dom amorph, mn sbbiky.

SILTSTONE: med brn, tr off wh, dom arg, com g/t Claystone, rr calc, mn micmic, sft-v sft, rr mod hd, dom amorph, mn sbbiky.

CARMICHAEL SANDSTONE:
681m MD (-199m TVDSS)

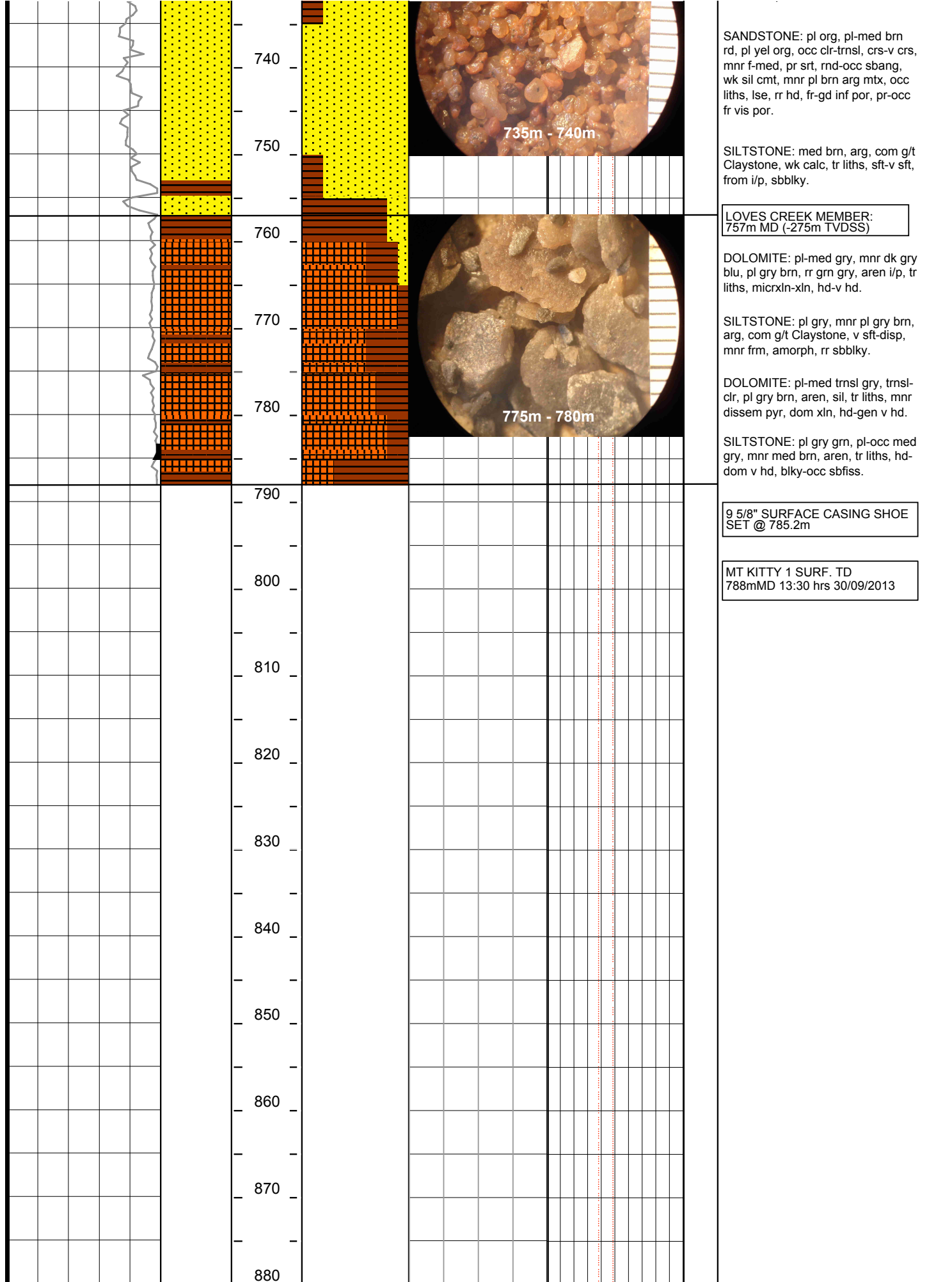
SANDSTONE: pl rd brn, pl org, vf-occ f, wl srt, sbmd-dom sbang, strg sil & tr calc cmt, mn-occ pl brn arg mt, mn carb spks, occ liths, hd-v hd, pr vis por.

SILTSTONE: med brn-brn rd, pl org brn, arg-aren, occ qtz incl, g/t vf Sandstone i/p, com micmic, mn liths, frm-mod hd, sbbiky-occ blkly.

SANDSTONE: pl rd brn, pl org, dom f-med, occ vf-crs, pr srt, sbmd-sbang, occ rnd, strg sil cmt, mn-occ pl brn arg mt, occ liths, hd-v hd, pr-occ fr vis por.

SANDSTONE: pl-med brn rd, occ pl org, f-occ med, mn vf-rr crs, pr srt, sbmd-sbang, strg sil cmt, mn-loc com pl brn arg mt, occ-loc com liths, hd-v hd, pr vis por.

SANDSTONE: pl-med brn rd, occ pl org, occ clr-trnsl, vf-v crs, v pr srt, sbmd-sbang, strg sil cmt, mn-loc com pl brn arg mt, occ-loc com liths, hd-v hd, lse i/p, fr inf por, pr-occ fr vis por.



9 5/8" SURFACE CASING SHOE SET @ 785.2m

MT KITTY 1 SURF. TD
788mMD 13:30 hrs 30/09/2013